



BRAMBLE

PRODUCT TEARSHEET



# Jefferson Tall Bath Cabinet

---

Shown in: **NBL HRW LDT**

SKU: **26208**

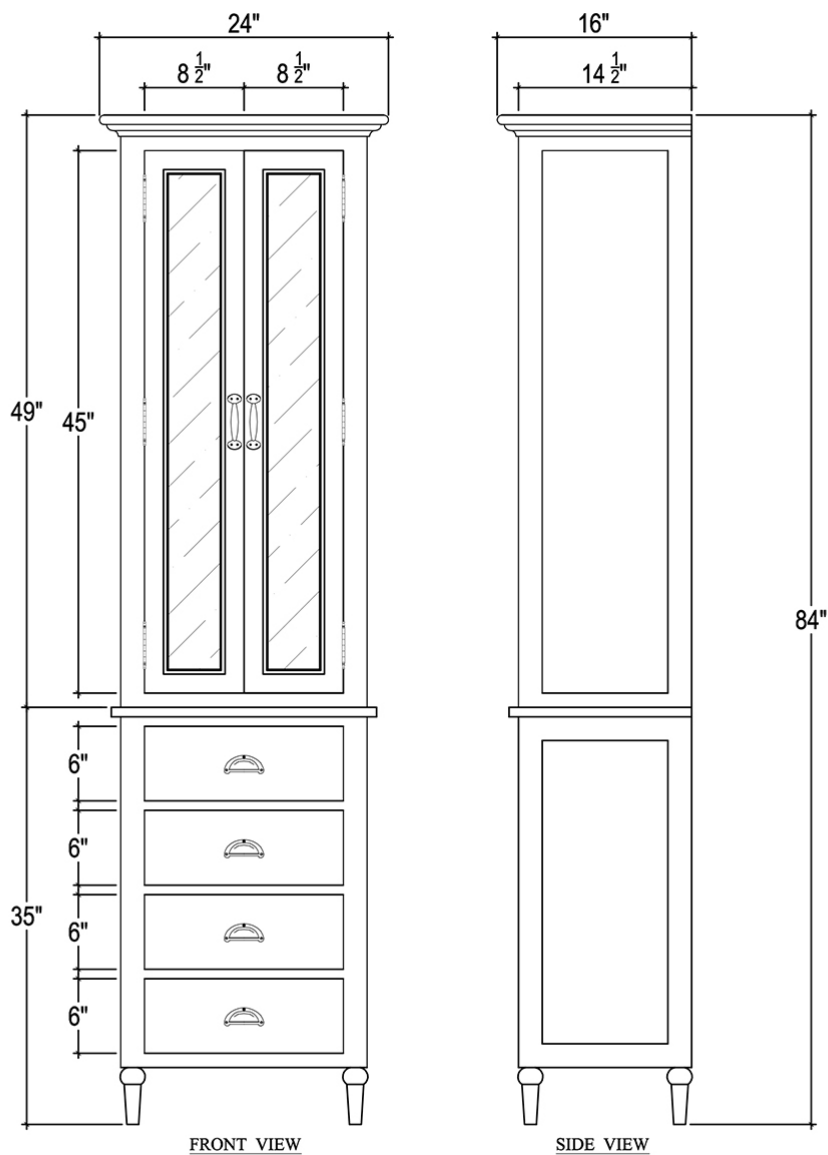
Size: **24W x 16D x 84H in**



## Overview

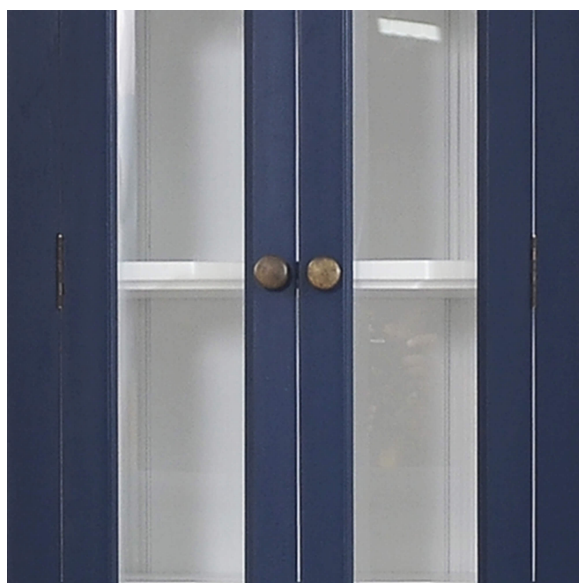
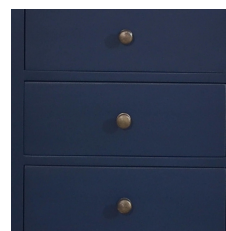
---

Offer optimal storage and style to the bathroom with this Jefferson Tall Bath Cabinet from the Mary Tudor collection. Delivering classic elegance, this mahogany cabinet features rustic cupped drawer pulls with a two-door cabinet accented with shelving and glass inset doors. This piece is offered with a vast array of finish and distress options to create a truly custom design.



## Visual Highlights

---



## Technical Specification

---

Dimensions	<b>24W x 16D x 84H in</b>	CBM	<b>0.569251</b>
Number of Packages	<b>2</b>	Cubic Feet	<b>20.1 ft<sup>3</sup></b>
Package 1 Dimensions	<b>27.2 x 19.3 x 54.7 in</b>	Package 1 Weight	<b>77.69 lbs</b>
Package 2 Dimensions	<b>25.2 x 18.3 x 40.2 in</b>	Package 2 Weight	<b>50.18 lbs</b>
Package Weight Total	<b>127.87 lbs</b>	Net Weight	<b>114.64 lbs</b>
Material	<b>Mahogany</b>		

<https://brambleco.limecommerce.com/26208>

---